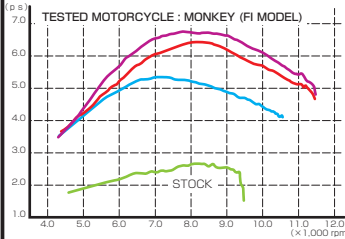


**BIG BORE KIT for FI MODEL available !**

**MONKEY (FI MODEL) • LITTLE CUB 50 / DELUXE (FI MODEL)  
88cc LIGHT BIG BORE KIT**

- 52mm piston with best compression ratio and high capacity injector included.
- A cylinder which has oil line extract included .
- Race use only
- Compression ratio 10.8 : 1 (stock 10 : 1)
- Valve timing angle
  - IN VALVE : OPEN 10° BTDC/CLOSE 32° ABDC    EX VALVE : OPEN 30° BBDC/CLOSE 12° ATDC
- Valve clearance
  - IN VALVE : 0.05 ~ 0.07mm    EX VALVE : 0.07 ~ 0.09mm
- Be sure to install with i-map to bring out the engine power.
- Fits with stock air cleaner  
(We recommend to use SUPER FUNNEL or POWER CLEANER)
- Thickness gauge and tappet adjust wrench are required besides basic tools.
  - TAPPET ADJUST WRENCH (For square adjust screw) 674-0900210

OPTION PARTS (sold separately)		NO.
SUPER FUNNEL	MONKEY FI	514-0500300
SUPER POWER CLEANER (35mm)	CUB FI	515-6000350
i-map	MONKEY FI	763-1137000
i-map	CUB FI	763-1136000
GPR UP MUFFLER (212V TYPE)	MONKEY FI	548-1137110
GPR DOWN MUFFLER (212V TYPE)	MONKEY FI	548-1137210
GPR DOWN MUFFLER (M1 TYPE)	MONKEY FI	548-1137310
CABTON MUFFLER	CUB FI	543-1136850
IRIDIUM PLUG IUF22 ~ 27A		—
elf MOTO 4 PROTEC 5w40		968-2000021
ROCKER ARM (Titanium) NUT		303-1013711
SUPER OIL COOLER KIT	MONKEY FI	330-1137700
SUPER OIL COOLER KIT	CUB FI	330-1140700
BREATHER FILTER UP-121		515-3001121



GPR DOWN MUFFLER (JMCA) + i map  
+ STOCK AIR CLEANER BOX

GPR DOWN MUFFLER (JMCA) + i map  
+ AIR FUNNEL or SUPER POWER FILTER

GPR DOWN MUFFLER (for RACE) + i-map + AIR FUNNEL  
※ NOTE : It can make it more powerful by port modification



MONKEY (FI MODEL) • LITTLE CUB 50 / DELUXE (FI MODEL) <b>88cc LIGHT BIG BORE KIT</b>	
TYPE	With high camshaft
NO.	214-1137401

MONKEY (FI MODEL) • LITTLE CUB 50 / DELUXE (FI MODEL) <b>88cc LIGHT BIG BORE KIT</b>	
TYPE	Without high camshaft
NO.	214-1137402

APPLICATION • MONKEY Fno.AB27-1900001 ~ • LITTLE CUB50 / DELUXE Fno.AA01- 4000001 ~

**Standard item for customizing, FENDERLESS KIT available !**

**ADDRESS V125/-G  
FENDERLESS KIT**

- BLACK ALUMITE ALUMINUM
- Flat button cap bolt included
- ※ Cut and hole modification are required for stock rear fender.



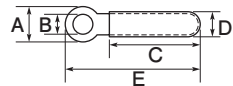
ADDRESS V125/-G <b>FENDERLESS KIT</b>	
NO.	691-2407000

APPLICATION • ADDRESS V125/-G CF46A/CF4EA ALL

**Available for M4 and M6 !**

**K-CON  
HARNESS CLIP (For M4 and M6)**

- A clip which is covered with PVC tube keeps the harness without damage.
- Material : BONDERIZED STEEL SHEET IRON



SIZE	TYPE	A	B	C	D	E	QTY
For M4 BOLT		8	4.5	42	4.8	54	1
For M6 BOLT		11	7	62	5	76	1

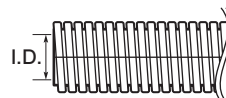


	TYPE	NO.
HARNESS CLIP (CL84554)	For M4 BOLT	0900-751-09001
HARNESS CLIP (CL117076)	For M6 BOLT	0900-751-09002

**Protect the cable and harness with ultrathin corrugate tube !**

**K-CON  
CORRUGATE TUBE (I.D. 3mm and 5mm)**

- Material : PP (Polypropylene)
- QTY : 2m x 1
- With slits
- ※ Use gloves to protect hands from sharp-cut slits.



	TYPE	NO.
CORRUGATE TUBE (BLACK)	I.D. 3mm	0900-755-05002
CORRUGATE TUBE (BLACK)	I.D. 5mm	0900-755-05003