



The you for purchasing "KOSO GP STYLE UNIVERSAL METER". Before operating the unit, Please read the instruction thoroughly and retain it for the future reference.

Notice

1. The meter is apply for DC12V only.
2. For installation, Please follow the steps described in manual. Any damage caused by wrong installation shall be imputed to the users.
3. Do not disassemble or change any parts excluding the manual description.
4. The interior examination or maintenance should be executed by our professionals.

MARK MEANING:

NOTE You could get the installation details from the information behind the mark.

△ Some processes must be followed to avoid the affection caused by wrong installation.

△ WARNING! Some processes must be followed to avoid damages to yourself or the public.

△ CAUTION! Some processes must be followed to avoid the damage to the vehicle.

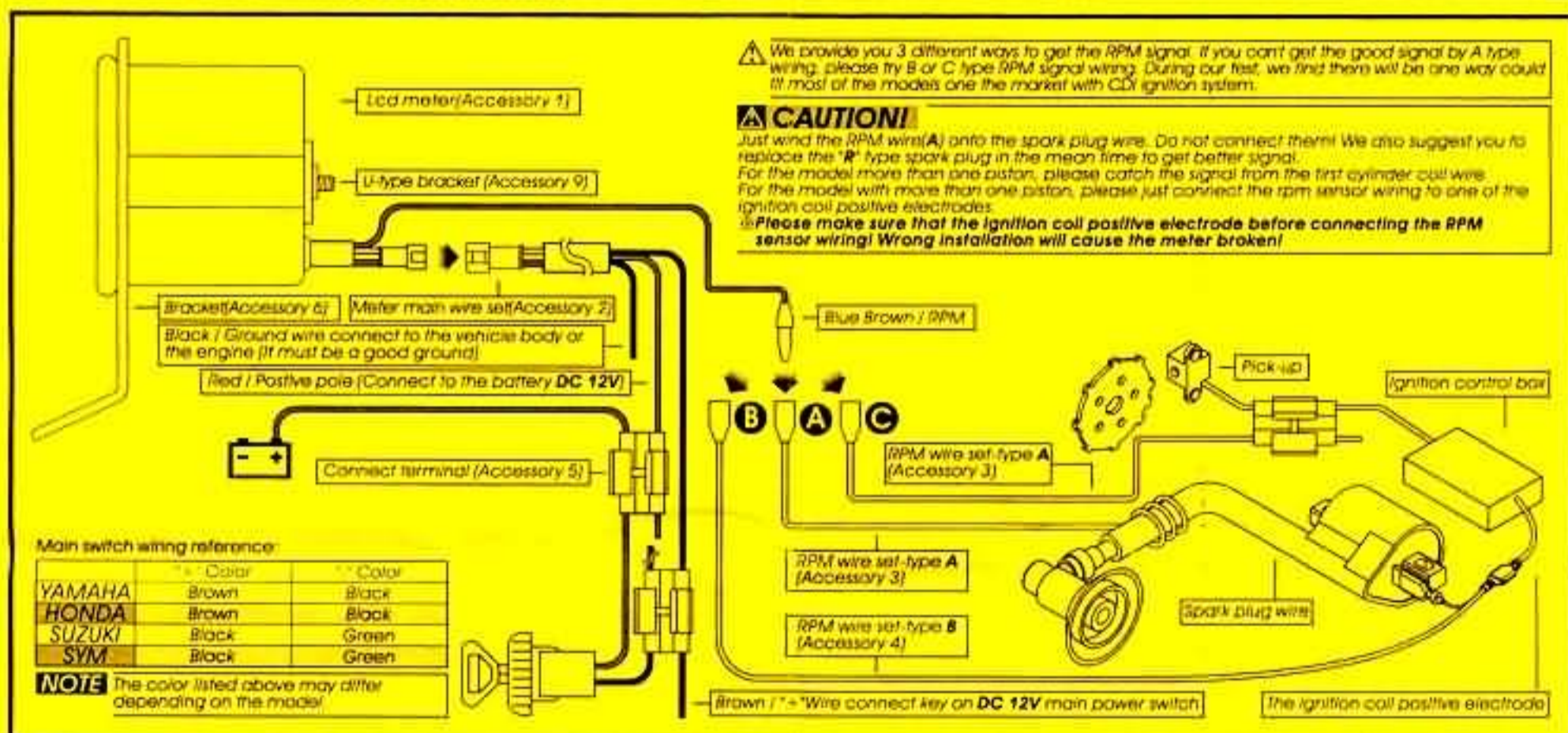


1 Accessory



NOTE Please contact the local distributor if the items you open are not the same. With the above-listed one.

2 Instruction of wiring-installation

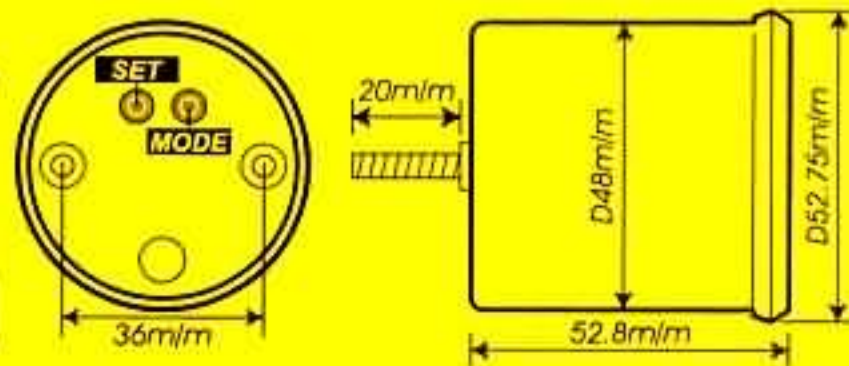


3 Function Instruction



- Range 0-15000rpm · Display unit : 100rpm
- Effective voltage DC 12V
- Effective temperature range -10--+60°C
- Meter size D48X52.8 m/m
- Meter weight Around117g

NOTE Design and specification are subject to change without natical



4 The over rpm shift light setting



In the main screen, press down the **SET & MODE** button at the same time for 3 seconds, and then you will enter the over RPM shift light setting.

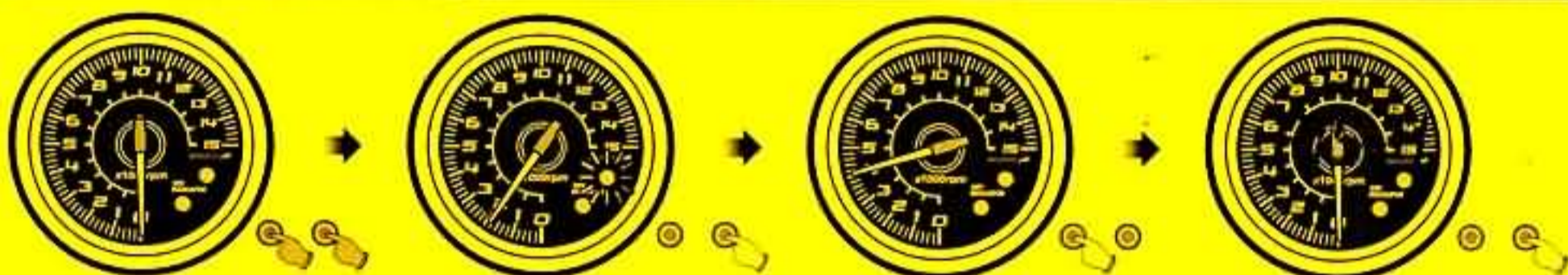
Press the **SET** button and the needle will move according to your setting. When the needle reaches the RPM you want to set, release the button.

After setting, press the **MODE** button 2 times to back to the main screen.

CAUTION!

- The over rpm alert function is used to warn the user the engine is over RPM.
- If there is any unusual flash, please check the rpm setting.
- The minimum setting number is 500 RPM.

5 The stroke & piston setting



In the main screen, press down the **SET & MODE** button at the same time for 3 seconds, and then you will enter the over RPM shift light setting.

In the over RPM shift light setting screen, press the **MODE** button again to enter the stroke and piston setting.

After entering the setting screen, press the **SET** button to choose the setting number you need. We define the stroke and piston as the following, so you could adjust the setting according to the following information.

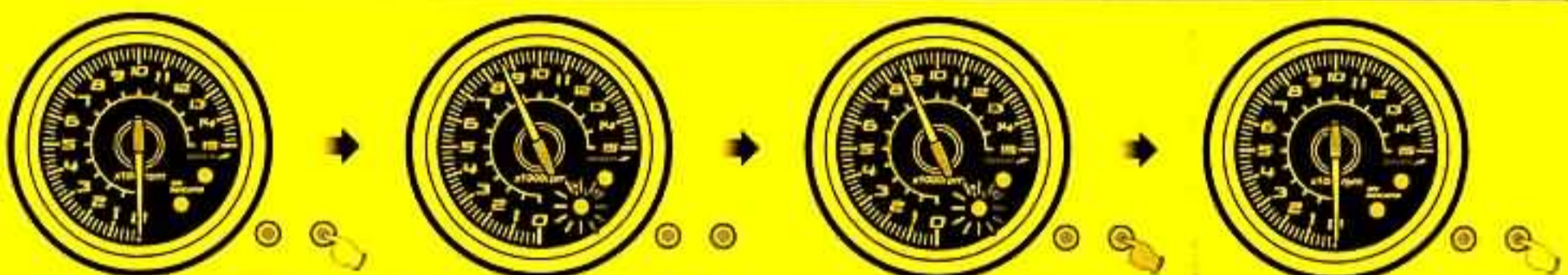
NOTE 2T

- 1 Piston → Please select the scale 2
 - 2 Piston → Please select the scale 4
- #### 4T
- 1 Piston → Please select the scale 1
 - 2 Piston → Please select the scale 2
 - 3 Piston → Please select the scale 3
 - 4 Piston → Please select the scale 4

CAUTION!

- Befor using this meter, please complete the setting of cycles and pistons. in our setting system.
- 2-Stroke engine means 360° ignition
- 4-Stroke engine means 720° ignition
- But some 4-stroke engine is 360° ignition, and must be set as 2-stroke.

6 The max rpm recall



In main screen, push **MODE** button 1 time.

Now the needle will move to the max RPM during your previous riding.

In the recall screen, press the **SET** button to reset the record.

Then press the **MODE** button 1 time to back to the main screen.

CAUTION!

- Max rpm recall function is used to record the max rpm in your riding.
- Max RPM limit is 15000 rpm.